

# FACILITIES & CAPABILITIES

	SIZE	SQUARE FEET	CEILING HEIGHT	8 X 10 EXHIBITS	THEATER	CLASS ROOM	CONFERENCE	U-SHAPE	BANQUET	RECEPTION	BUFFET	DINNER DANCE	HOLLOW SQUARE	TABLE TOPS
De Anza Ballroom	128' x 83'	10,655	13' 5"	59	1,000	520	124	150	750	1,000	600	650	160	65
De Anza I or II	39' x 84'	3,275	13' 5"	20	350	150	64	68	170	300	130	120	80	25
De Anza III	49' x 84'	4,115	13' 5"	27	425	220	80	80	220	400	170	180	88	27
De Anza Foyer		3,287	9' 9"	21						300				26
Bonsai Ballroom	67' x 38'	2,546	10'	10	200	130	60	50	140	200	130	120	60	15
Bonsai I or II	26' x 38'	988	10'		70	55	25	30	50	150	40	30	30	8
Bonsai III	15' x 38'	570	10'		30	18	24		24	30	16			4
Portola Room	51' x 38'	2,529	7' 9"	15	125	60	30	40	120	150	80	80	48	15
Driftwood I	42' x 15'	712	8' 10"		40	30	30	36	40	50	30	20	30	
Driftwood II	23' x 20'	460	8' 10"		36	21	15	18	20	25	20	15	15	
Cottonwood Room	25' x 60'	1,500	8'		80	70	46	36	80	100	60	60	46	
Cottonwood I or II	25' x 30'	750	8'		40	30	20	18	40	75	30		24	
Ironwood Room	25' x 56'	1,400	8'		80	60	30	30	80	100	60	60	40	
Ironwood I or II	25' x 28'	700	8'		40	30	18	18	40	75	30		24	
Redwood Room	25' x 56'	1,400	8'		80	60	30	30	80	100	60	60	46	
Redwood I or II	25' x 28'	700	8'		40	30	20	18	40	75	30		24	
Executive Boardroom		760	8' 6"				20				18			

## MONTEREY CONFERENCE CENTER

Serra Ballroom	135' x 140'	19,150	15'	125	2,000	1,250	78	96	1,140	1,900	900	990	140	120
Serra I	78' x 135'	10,500	15'	57	750	700	62	96	460	1,000	460	480	100	64
Serra II	64' x 135'	8,650	15'	55	725	550	62	96	450	800	300	350	100	47
Steinbeck Ballroom	70' x 139'	9,730	18'	55	984	600	104	96	600	950	400	540	144	56
Steinbeck I	48' x 70'	3,430	18'	20	360	220	64	72	240	300	200	200	80	21
Steinbeck IA	22' x 40'	880	18'	6	90	56	32	32	60	85	50	40	32	7
Steinbeck IB	24' x 40'	960	18'	6	96	56	32	32	60	95	50	40	32	7
Steinbeck IC	22' x 40'	880	18'	6	90	56	32	32	60	85	50	40	32	7
Steinbeck II	39' x 70'	2,730	18'	15	320	167	56	68	180	250	180	150	70	15
Steinbeck III	48' x 70'	3,430	18'	20	350	260	64	64	230	300	200	200	80	22
Colton	29' x 57'	1,653	12'	6	160	90	50	50	110	150	99	80	62	11
Colton I	19' x 29'	551	12'		50	37	24	26	40	50	30		28	5
Colton II	19' x 29'	551	12'		50	37	24	26	40	50	30		28	5
Colton III	19' x 29'	551	12'		50	37	24	26	40	50	30		28	5
Stevenson I	23' x 22'	506	12'		35	24	18	18	32	50	20		18	
Stevenson II	27' x 22'	594	12'		50	29	18	18	32	50	20		24	

## OUTDOOR EVENT SPACE

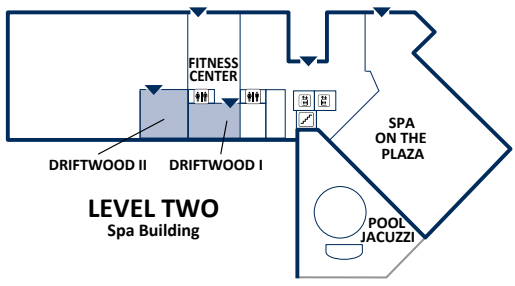
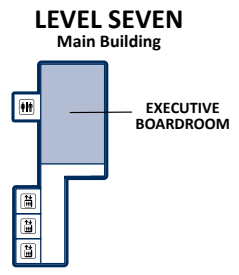
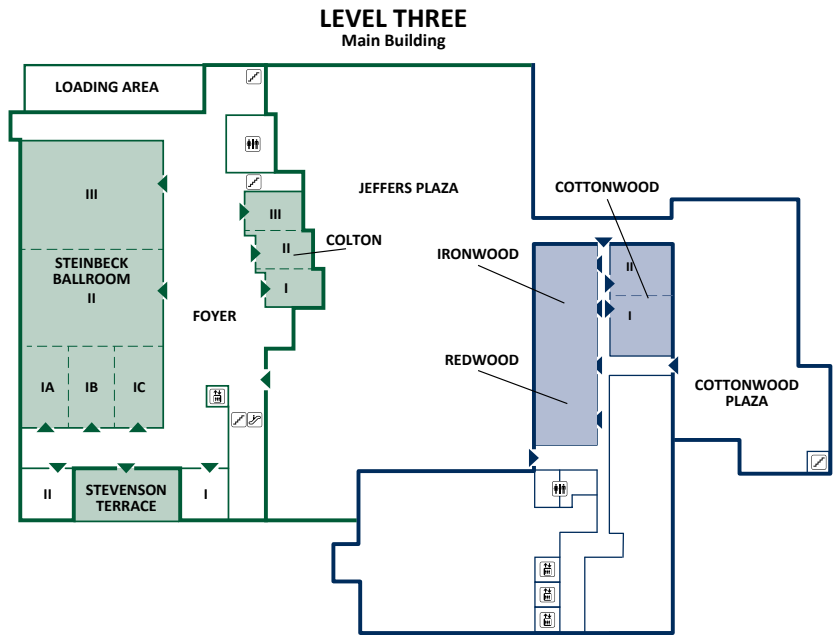
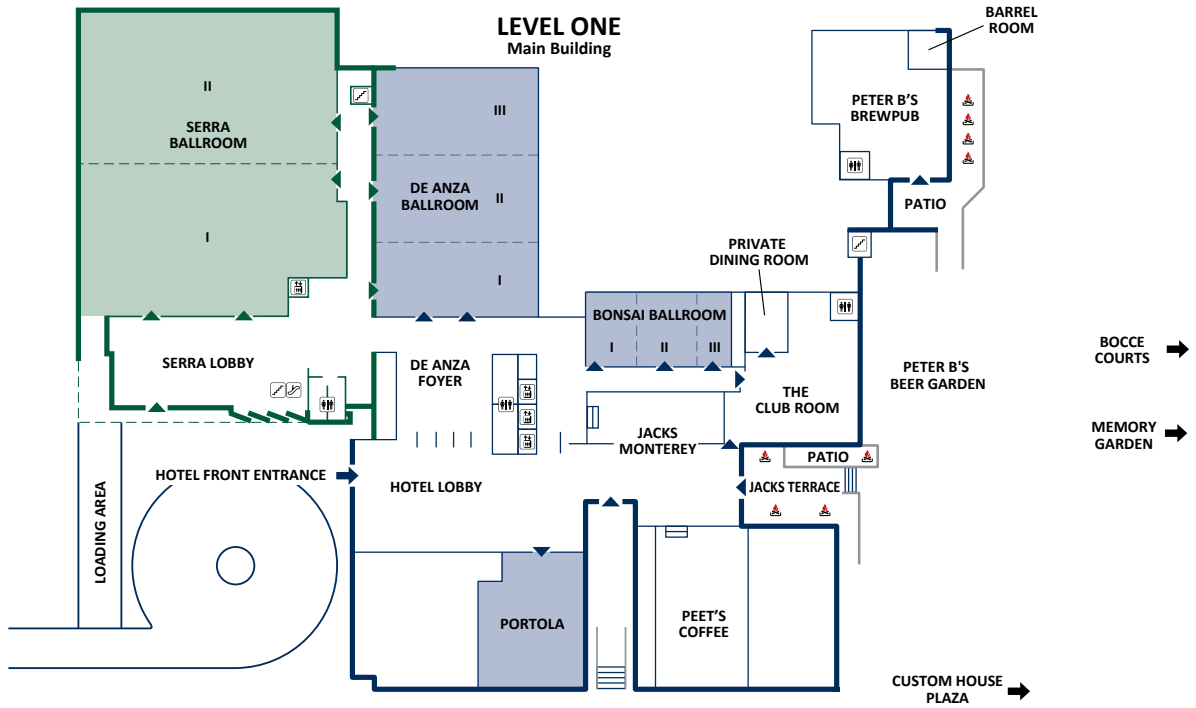
Stevenson Terrace	55' x 29'	1,595							150	150	120			
Jeffers Plaza		4,200							160	400	160			
Cottonwood Plaza		4,400							120	200	120			
Memory Garden									330	500	330	330		
Upper Custom House*									200	300	200			
Lower Custom House		28,750							1,200	1,500	1,200			

## ON-SITE RESTAURANTS & VENUES

The Club Room		4,593	9'11"		120				200	250	180	180		
Private Dining Room	12' x 32'	416	10'				22		24	24				
The Club Room Patio		790							35	40				
Peter B's Brewpub		4,090							180	180	180			
Peter B's Beer Garden		4,671							100	150				
Barrel Room	14' x 18'	249	8'3"				16		16	16				
Peter B's Patio		790								40				
Jacks Terrace		2,666							75	150	75			
The Club Room Patio & Jacks Terrace		3,456							110	185	110			

\*Bocce Courts are located in Upper Custom House Plaza for an additional rental fee.





NOT TO SCALE

**PORTOLA HOTEL & SPA**  
 AT MONTEREY BAY

- PORTOLA HOTEL & SPA
- MONTEREY CONFERENCE CENTER
- ↗ ESCALATOR
- ↘ STAIRWAY
- ⬆ ELEVATOR
- ⬆ STAIR ACCESS INTO ROOM
- ♿ RESTROOMS
- ▶ ENTRANCE
- 🔥 FIRE PIT